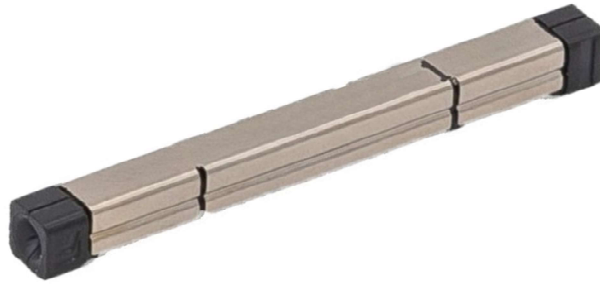


Mechanical Splice



Product description

The Mechanical Splice Unit is an alternative to a fusion splice sleeve, allowing fibers to be spliced without a fusion splicer, and is the technology that underpins Fujikura's FAST Connectors.

Features

- Quick & easy splicing of 250 / 900 μm fibers
- Fusion splicer not required
- Fast and easy operation
- Fits on most standard splice trays

Specification

Item	Content
Applicable fibre	250 μm or 900 μm
Connection Loss	Average ≤ 0.10 dB
Return Loss	≥ 40 dB
Size (L \times W \times H)	40 \times 4 \times 4 mm
Fibre Pull Resistance	< 3 N (with connection loss change of < 0.20 dB)
Required Tools	Assembly Tool, Fibre Cleaver*

*Fibre Cleaver sold separately.

Fujikura Asia Limited
438A, Alexandra Road #08-03 Block A, Alexandra Technopark, Singapore 119967
<http://www.fujikura.com.sg>

Fujikura Asia Limited

Mechanical Splice

ORDERING INFORMATION

Mechanical Splice Units:

For 250 μm fibre: Single Fiber Mechanical Splice 025

For 900 μm fibre: Single Fiber Mechanical Splice 09



Package information :

Each set of minimum 20 pcs Single Fiber Mechanical Splice (025 or 09) comes with an assembly tool, consisting of:

1. Installation Jig (shown with Mechanical Splice Unit ready for installation)
2. Simplified Fibre Stripper for 250 μm fibre
3. Fibre Holder Spacer
4. Fibre Holder (x 2)

